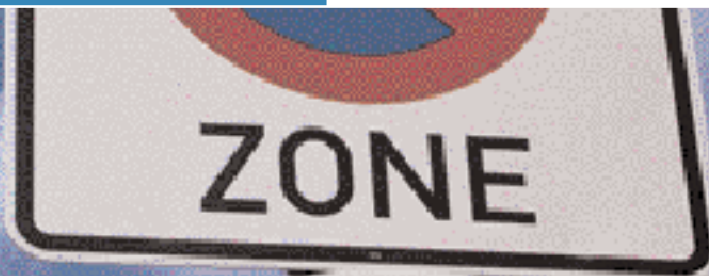


Traffic Regulation Orders



Hydrock Byways & Highways
TRO experience includes:

- Waiting Restrictions
- Speed Limits
- Weight Restrictions
- One Way Streets
- Decriminalised Parking
- Restricted Movements / Turns
- School Speed Limits and Traffic Restrictions
- Associated Studies
- Parking Studies
- TRO Validation
- Public Consultation
- Area / County Wide Reviews
- Bus Priority

Traffic Regulation Orders (TROs) are a major form of traffic management for Local Authorities and for developers are a necessary part of their requirements to satisfy planning conditions/obligations on most schemes.

Successful adoption, implementation and enforcement of TROs depends on the quality of the legal Order, the preparation of which is a specialised task.

Hydrock Byways & Highways' traffic specialists have extensive local government and legal experience and work with both Local Authorities and developers to prepare enforceable Traffic Regulation Orders, including the associated schedules and statutory notices and to advise on how best to achieve the required results throughout the Consultation, Advertising and Order making process. They can:

- draft the necessary Orders, Schedules and Statutory Notices
- provide technical advice
- conduct statutory and public consultation
- provide work instructions for the correct traffic signs and road markings for permanent, temporary and experimental TRO's and speed limits
- survey on-street restrictions
- provide support to clients across the UK including the provision of skilled, professional resources for Local Authority clients during periods of heavy workloads
- draft legally compliant TROs for developers in anticipation of LA requirements, thereby hastening the planning process
- assist developers by providing a mechanism to efficiently implement TRO's required to satisfy Planning condition/obligation, through an agreed system and in close liaison with the Local Highway Authority
- provide a time efficient, cost effective service for Local Authorities